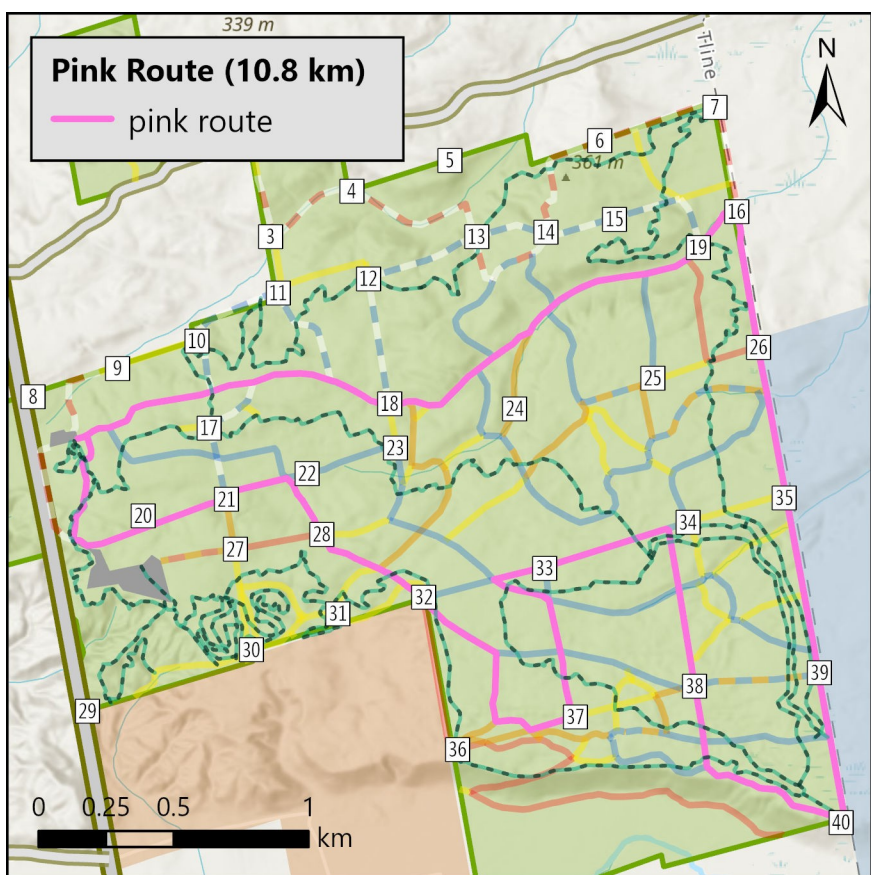
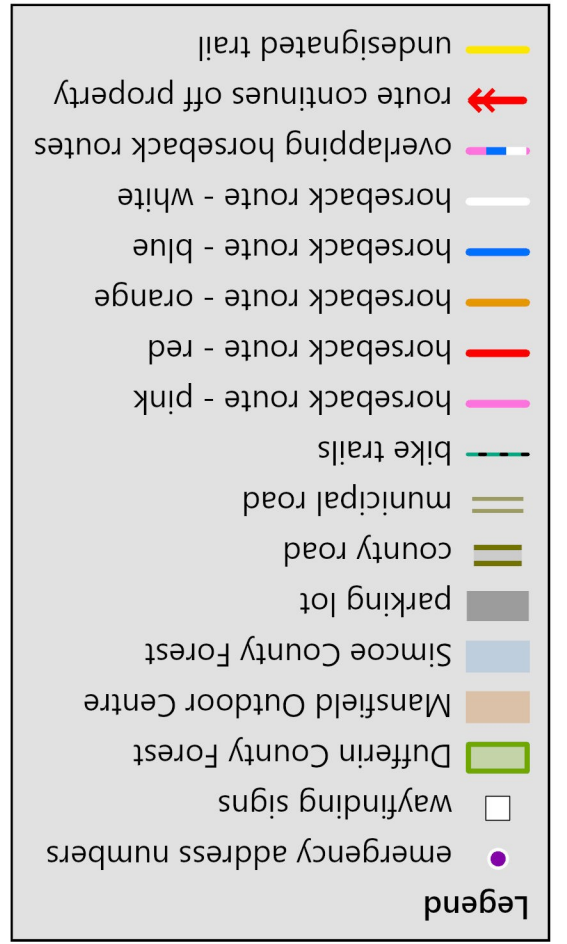


The six-digit emergency numbers shown on this map are part of the Dufferin County-wide rural addressing system. The one- and two-digit intersection identification markers are unique to the Main Tract and to Airport Road/Dufferin County Road 18.



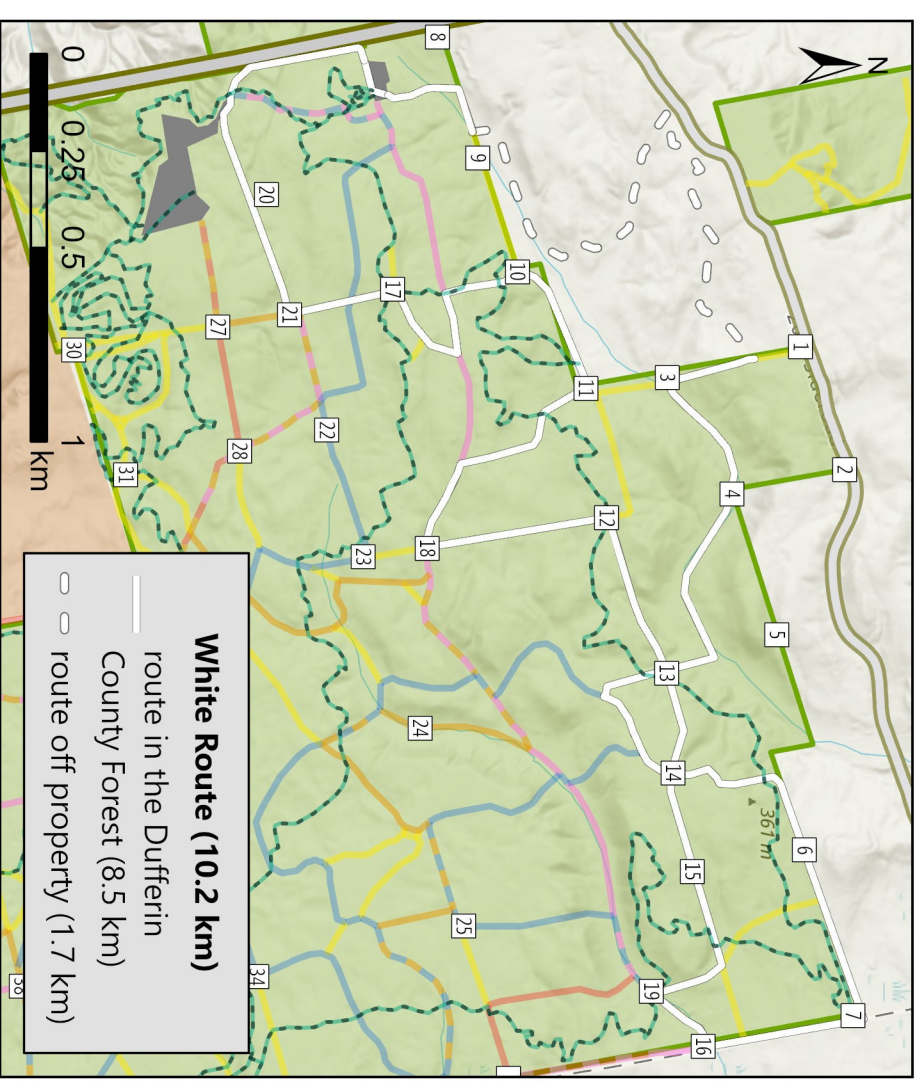
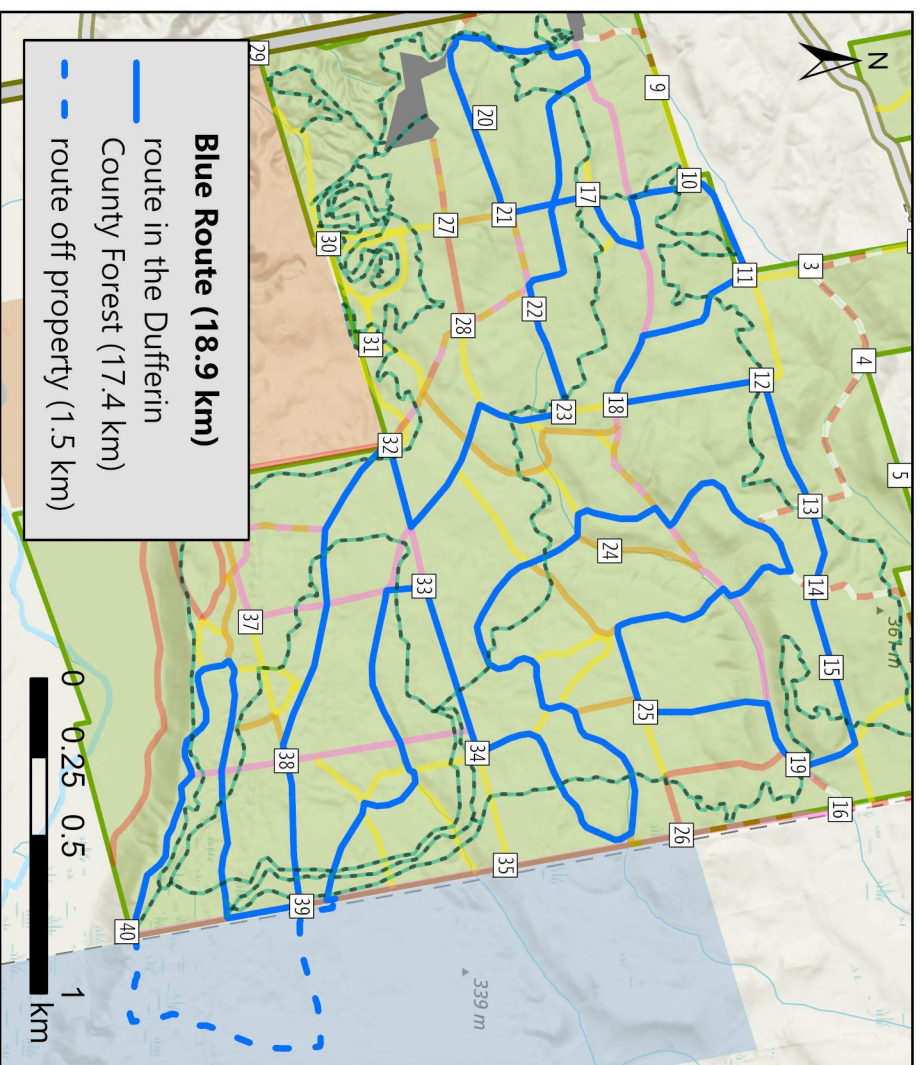
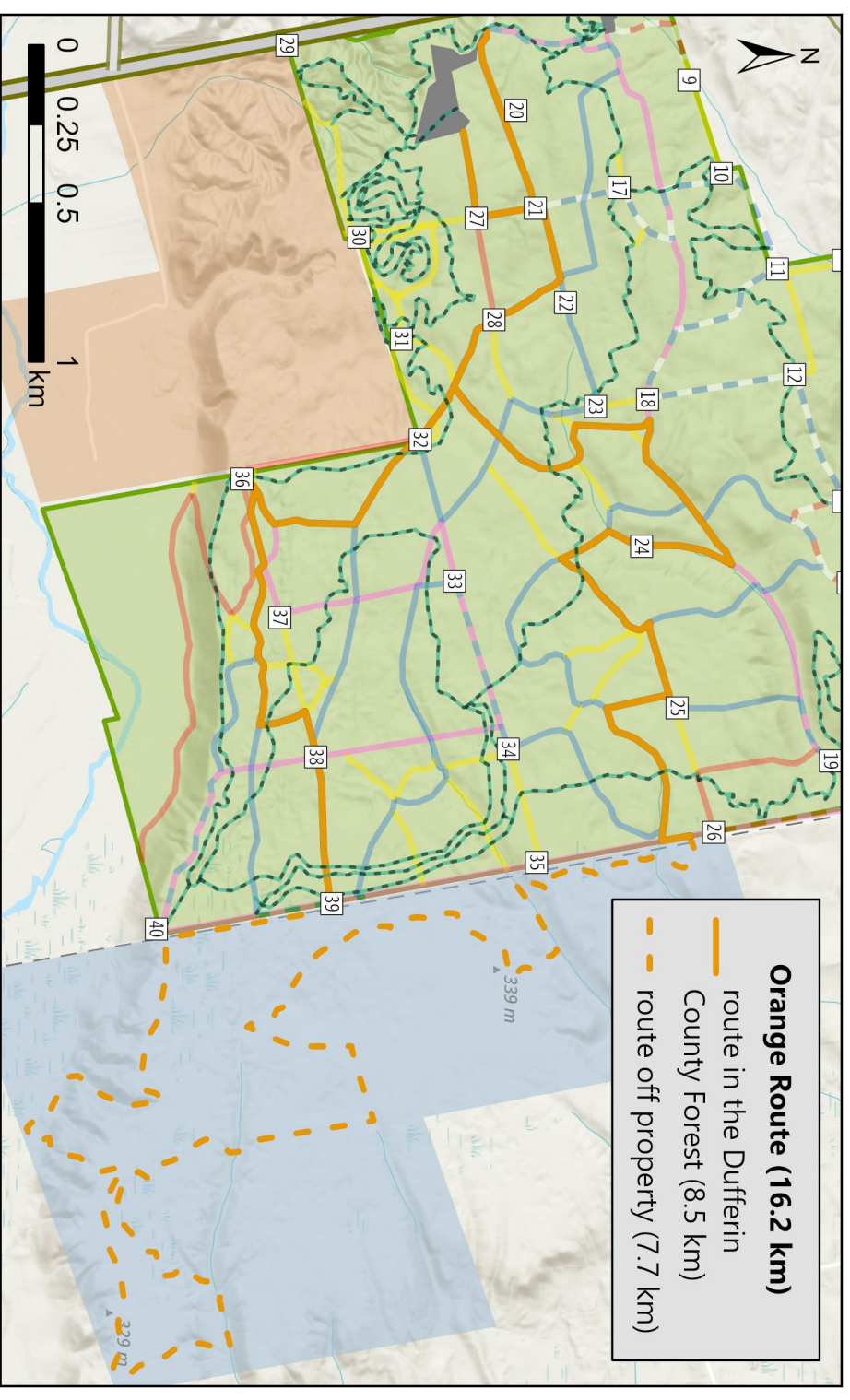
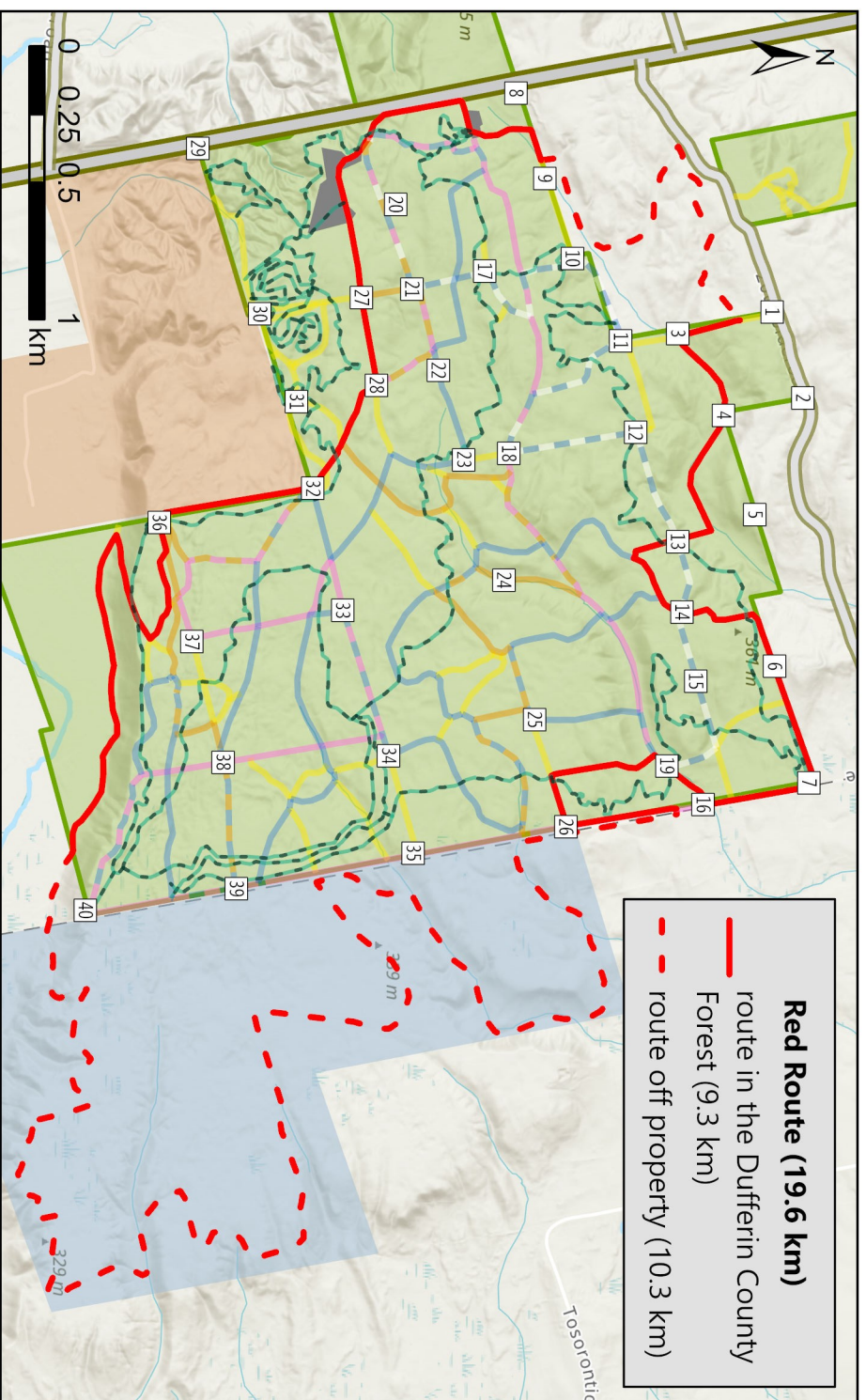
Dufferin County Forest Main Tract Horseback Riding Route Maps



For more information:

County Forest Division
c/o Museum of Dufferin
936029 Airport Road
Mulmur, ON, L9V 0L3
519-941-1114 or 877-941-7787
forest@dufferincounty.ca
www.dufferincounty.ca





Notes for equestrians:

- Access to trails outside of the Dufferin County Forest is the jurisdiction of the relevant landowners. These trails are not maintained or monitored by the County and the accuracy of their mapping is not guaranteed.
- Horses are not permitted on trails which are not horseback riding routes.
- Please kick manure off the trail for the sake of other trail users. Manure and trailer contents must be removed from parking lots and disposed of offsite or at the designated area in the event field.
- Before taking your horse on the trail, train them to handle situations that may occur there. To avoid damaging the trail or causing injury to other trail users, keep to a walk or a gentle trot. Never gallop on the trail.
- Some trails may close seasonally or during forest management activities. Obey trail closure signs.
- Natural hazards exist in the Forest; you are responsible for your safety. Please be aware of other users at all times. Obey all signs.