

- Notes:
- Cross-country skiers must purchase a trail pass from the Mansfield Outdoor Centre to use the groomed trails.
  - Snowmobilers must display a current OFSC trail permit and follow all OFSC rules/regulations while using the designated trails in the Dufferin County Forest.
  - Please avoid walking or snowshoeing on groomed paths.



## Dufferin County Forest

The Main Tract is just one of the fourteen tracts that make up the 1,066 hectare (2,636 acre) Dufferin County Forest. It is the largest of the tracts, 607 hectares or 1,501 acres in size.

Major tree species in the County Forest include red pine, red oak, sugar maple, white ash, black cherry, white pine, white spruce, eastern white cedar, larch, white birch, and poplar. Together with other biota, these represent a variety of ecosystems, including conifer and hardwood plantations, upland tolerant hardwoods, upland oak forests, bottomlands, wetlands, and creeks.

The Forest is managed by the County of Dufferin on a sustainable, multi-use basis. The Forest serves many important functions in terms of erosion and water control, natural heritage protection, biodiversity, wildlife habitat, recreational opportunities, and support of the rural economy through timber production and employment opportunities.



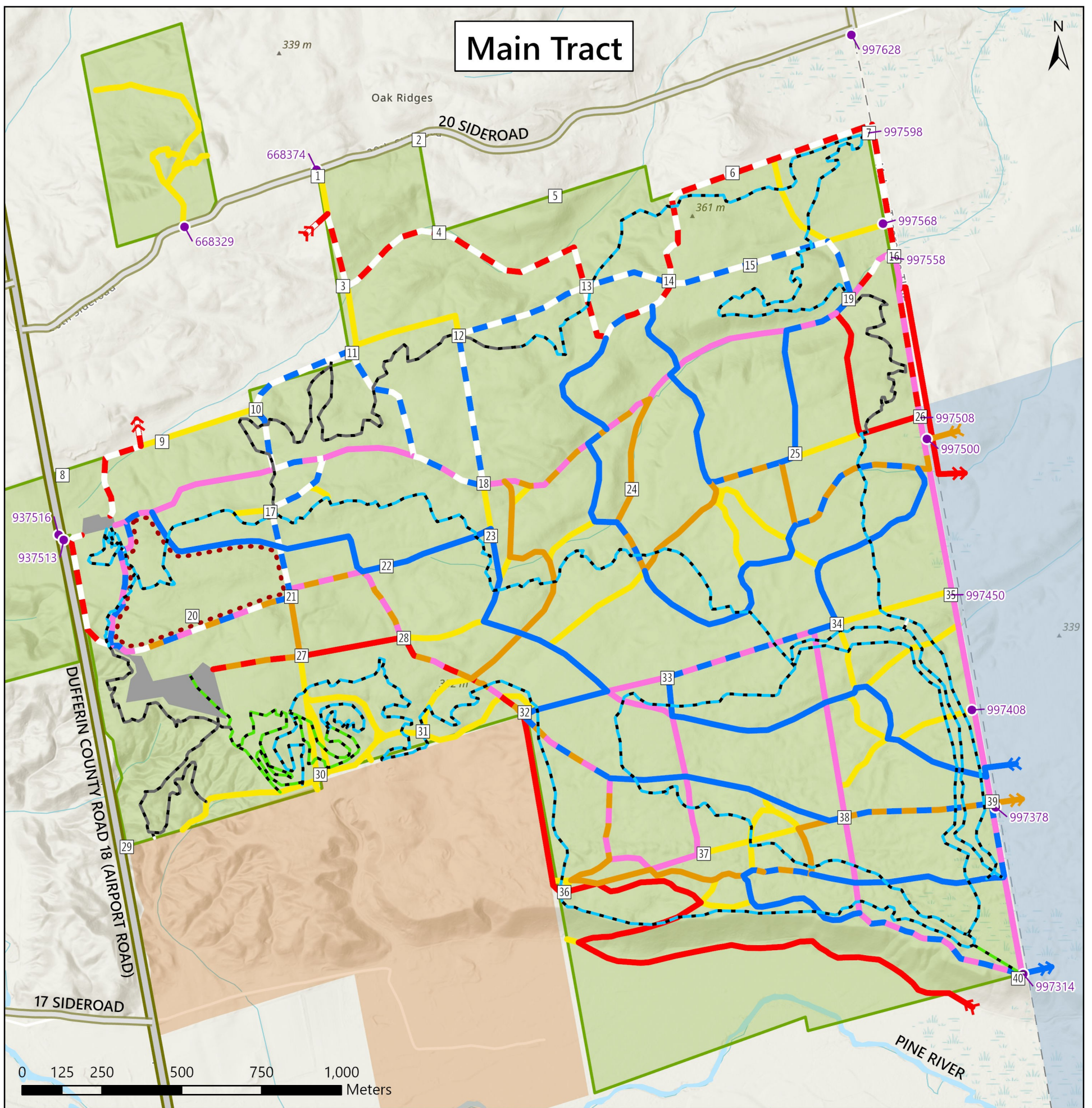
## Dufferin County Forest Main Tract Trail Map



### For more information:

County Forest Division  
 c/o Museum of Dufferin  
 936029 Airport Road  
 Mulmur, ON, L9V 0L3  
 519-941-1114 or 877-941-7787  
 forest@dufferincounty.ca  
 www.dufferincounty.ca





**Legend**

- emergency address numbers
- wayfinding signs
- Dufferin County Forest
- Mansfield Outdoor Centre
- Simcoe County Forest
- parking lot
- county road
- municipal road
- interpretive trail (1.7 km)
- bike trail - easy
- bike trail - more difficult
- bike trail - very difficult
- horseback route - pink
- horseback route - red
- horseback route - orange
- horseback route - blue
- horseback route - white
- overlapping horseback routes
- ➔ route continues off property
- undesignated trail

**Notes:**

- Hikers, runners, and snowshoers are permitted on all trails. In the winter, please avoid walking on groomed ski and bike paths.
- Natural hazards exist in the Forest; you are responsible for your safety. Please be aware of other users at all times. Obey all signs.
- Recreational use of the County Forest is governed by a recreational use policy and County of Dufferin by-law 2017-39. At the Main Tract, the following rules apply:
  - No motorized vehicles except snowmobiles on designated O.F.S.C. trails
  - No hunting
  - No littering or dumping
  - No campfires
  - No camping

Copies of the full by-law and recreational use policy are available at [www.dufferincounty.ca](http://www.dufferincounty.ca) or from the County Forest Division office (contact information on reverse).

- The six-digit emergency numbers shown on this map are part of the Dufferin County-wide rural addressing system. The one- and two-digit intersection identification markers are unique to the Main Tract to facilitate wayfinding within the Tract and to Airport Road/Dufferin County Road 18.

Samples of the two types of signs:

